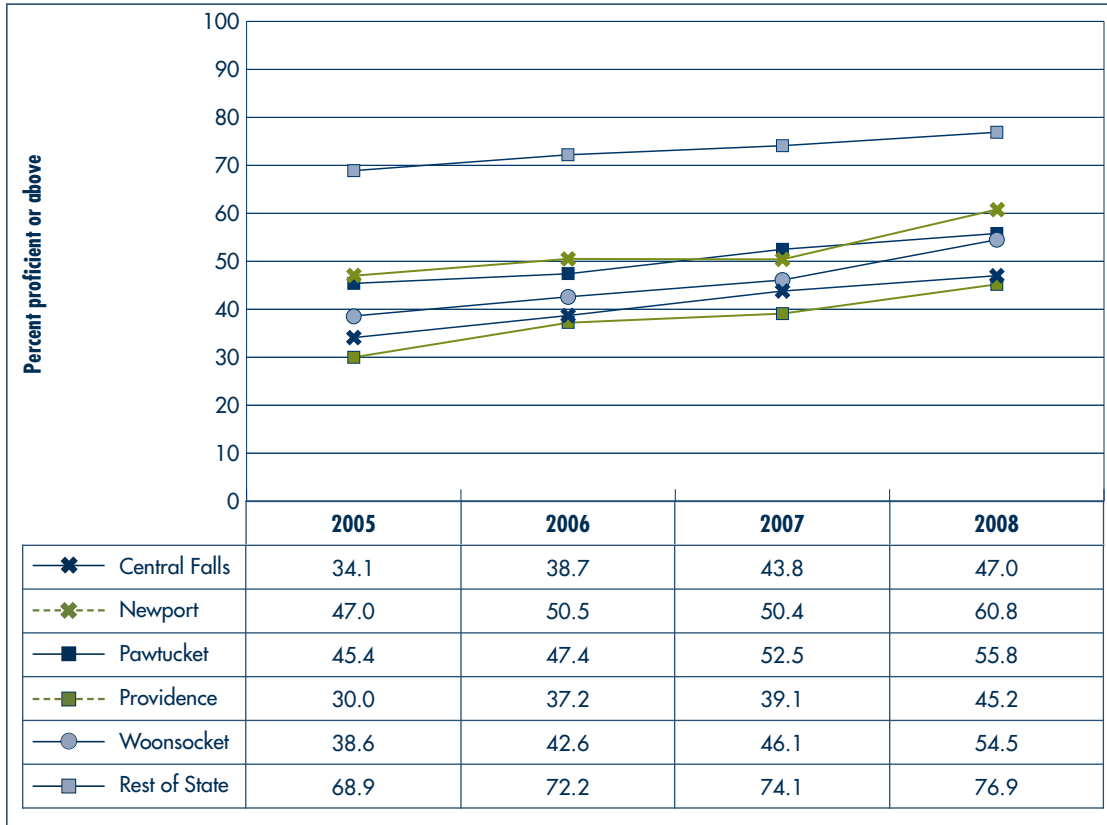


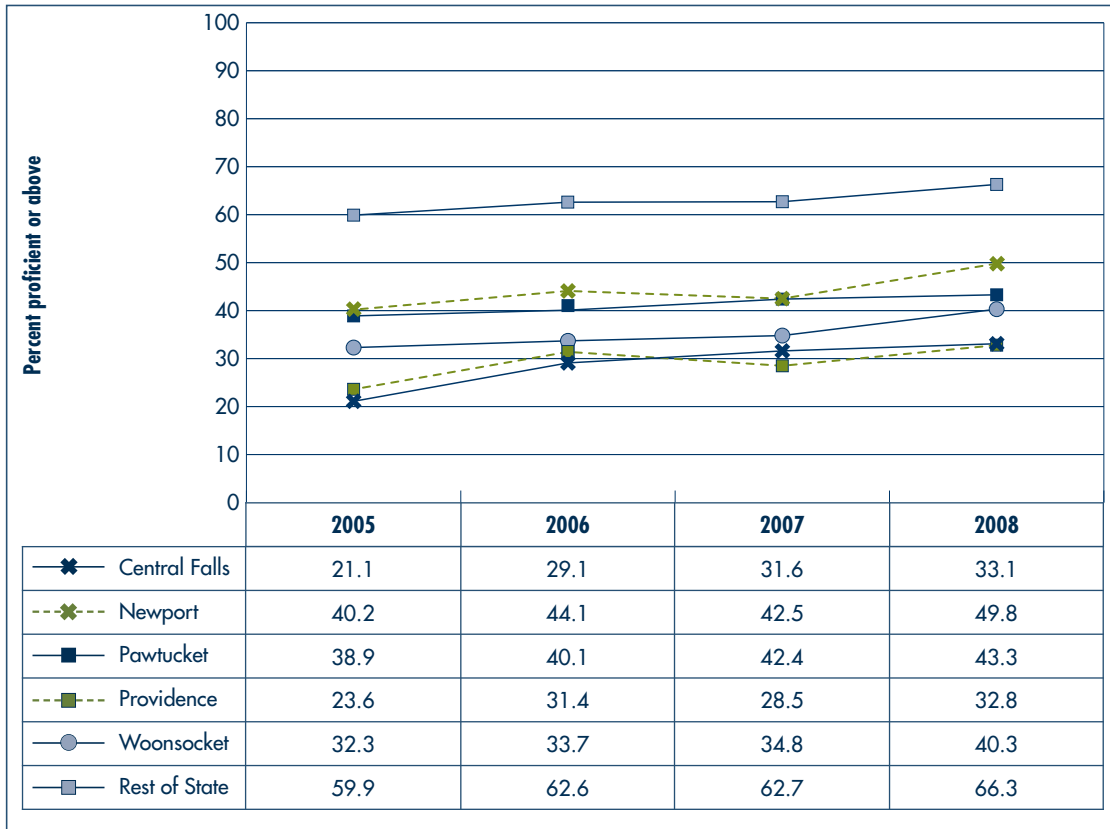
B7 Comparative Data on the Urban Core Districts

FIGURE 1
NECAP Results in Reading, grades 3–8



Source: Rhode Island Department of Education

FIGURE 2
NECAP Results in Math, grades 3–8



Source: Rhode Island Department of Education

FIGURE 3
Demographic Profile of Students in RI Urban Districts vs. State

	Central Falls	Newport	Pawtucket	Providence	Woonsocket	STATE	Proportion of State
Child Population	5,531	5,199	18,151	45,277	11,155	247,822	34.4%
Public School Enrollment	3,481	2,258	8,667	25,012	6,286	147,407	31.0%
Children on Free/Reduced Lunch	2,210	1,267	4,542	18,045	3,494	41,162	71.8%
English Language Learners	827	60	980	3,947	300	7,920	77.2%
Special Education	814	495	1,391	4,743	1,509	27,345	32.7%
Minority Enrollment	85.0%	49.0%	56.0%	88.0%	42.0%	31.0%	72.0%
Student Mobility	40.0%	31.0%	32.0%	28.0%	22.0%	18.0%	—
High School Graduation Rate	46.0%	60.0%	48.0%	58.0%	54.0%	70.0%	—
Per Pupil Expenditure	\$11,277	\$11,812	\$9,364	\$10,239	\$8,797	\$9,736	—

Source: 2008 Rhode Island KIDS COUNT Factbook

FIGURE 4

Four-Year Cohort Graduation Rates for the Class of 2008 by City

Student Group	Cohort Size	Graduation Rate	Dropout Rate	% Completed GED	% Still in School
Central Falls	305	52%	29%	2%	16%
Newport	192	66%	22%	3%	9%
Pawtucket	717	57%	26%	6%	11%
Providence	2,379	63%	26%	2%	9%
Woonsocket	492	60%	28%	3%	9%
All Urban* Students	4,385	61%	26%	3%	10%
All Rhode Island Students	13,163	74%	16%	3%	7%

Source: Rhode Island Department of Education

*Urban districts in this analysis are Central Falls, Newport, Pawtucket, Providence, West Warwick, and Woonsocket.

FIGURE 5

Four-Year Cohort Graduation Rates for the Class of 2008 by Demographic Groups

Student Subgroup (for All Urban* Districts)	Cohort Size	Graduation Rate	Dropout Rate	% Completed GED	% Still in School
Native American	38	50%	29%	3%	18%
Asian	202	66%	26%	<1%	7%
Black	855	62%	24%	2%	13%
Hispanic	1,878	61%	27%	2%	10%
White	1,412	61%	26%	5%	9%
Special Education	1,029	44%	35%	3%	18%
Regular Education	3,356	67%	23%	3%	7%
English Language Learners (ELLs)	808	56%	30%	1%	13%
Non-ELLs	3,577	63%	25%	3%	9%
Low-Income	3,598	59%	27%	3%	11%
Higher-Income	787	71%	21%	3%	5%
Female	2,220	67%	23%	3%	7%
Male	2,165	55%	29%	3%	13%

Source: Rhode Island Department of Education

*Urban districts in this analysis are Central Falls, Newport, Pawtucket, Providence, West Warwick, and Woonsocket.